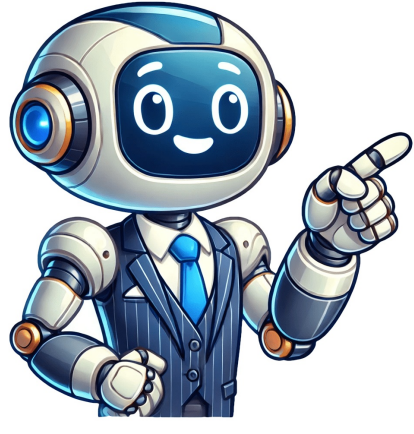


Continue





Given article text here To fix a malfunctioning Skyworth device, you may need to perform a force restore, also known as a hard reset. This process will erase all data on the device, so it's essential to know the passkey to reactivate it afterwards. To initiate a hard reset, search for your device and follow the provided steps. If your Skyworth TV is experiencing performance issues like lagging or slow speed, restarting itself after regular intervals, or displaying flashing colors, a factory reset may be necessary. To perform a factory reset on your Skyworth TV, start by accessing the Device Preferences menu through the "Settings/Gear" icon. Select the "Reset" option and press OK. You will then need to confirm the reset again and wait for the TV to reboot twice, which should take around 3-4 minutes. This process will restore your Skyworth TV to its default settings, eliminating any persisting app-related issues or color/audio problems. If you've lost or damaged your Skyworth TV, you can use the buttons on the device's hardware to perform a factory reset. Alternatively, if your mobile phone has an IR blaster, you can download the Skyworth remote app and follow the same steps as before. If you don't have an IR blaster-enabled phone, consider purchasing a universal remote and pairing it with your Skyworth TV. To troubleshoot picture issues on your Skyworth TV, start by navigating to "Device Preferences" and selecting "Picture." Then, locate the "Reset to Default" option in the sub-menu and confirm you want to reset everything, which only affects picture settings. Wait a few seconds for the factory settings to be restored. If this solves your problem, great! However, if not, consider checking out related guides like connecting your Skyworth TV to WiFi or updating its software. Keep in mind that minor issues can often be resolved on your own without professional help. But remember, if none of these solutions work, don't hesitate to contact Skyworth's customer care for further assistance. 1- Locate the power and volume buttons on your Skyworth STD6500. 2- Disconnect the TV from power or unplug it completely. 3- Press and hold both the power and volume down buttons simultaneously until you see the logo, then release them. Our terms of use regarding cookies, as well as our overarching data protection guidelines

How to factory reset skyworth tv. How to reset skyworth tv without remote. How to factory reset skyworth android tv without remote. Skyworth factory reset without remote. How do i reset my skyworth remote. Skyworth tv reset button.