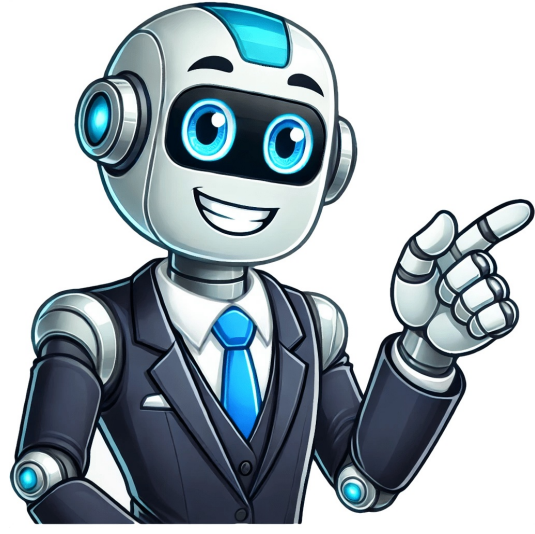


[Click Here](#)



Having a Polaris Sportsman digital display is a dream come true for many All-Terrain Vehicle (ATV) fanatics. However, this device tends to experience problems overtime. This article highlights some of the digital display problems and how you can easily troubleshoot them. What Is A Sportsman Digital Display?The Sportsman digital display, formally known as the Polaris Interactive Digital Display (PIDD) is a device that can be attached to your Polaris Sportsman ATV. The device allows you to connect to your mobile phone whilst riding. It also gives you access to your GPS and it can also notify you when your Polaris Sportsman as a problem.Polaris Sportsman Digital Display IssuesScreen Frozen/ LockedOne of the most problematic issues faced by the Polaris Sportsman digital display is that the screen usually freezes or locks. In order to troubleshoot this problem you will have to reset the digital display by pressing and holding the key 5 for 20 seconds.Screen Appears WhiteAnother issue experienced by the Polaris Sportsman digital display is that the screen can become white. This usually happens when the interactive digital display is turned on. It is usually a sign that the device was left in diagnostics mode during manufacturing testing. In order to troubleshoot the problem, you should push and hold key 5 until the device reboots. When it has rebooted, you should update the interactive digital display with the most current software. Screen Turns Black While UpdatingThe screen of a Polaris Sportsman digital display can turn black whilst you are trying to install an update. This is a sign that the device is failing to update or the file on your flash is corrupted. In order to troubleshoot this problem, please follow the steps below:Remove the flash drive from the device and re-format it as FAT 32.Turn off the Polaris Interactive Digital Display for 10 seconds and then switch it back on.Visit the RIDER X website and re-download the latest update of the software.Put the flash drive into the USB port on the digital display and then wait for the device to go into boot loader mode.Once it is in boot loader mode, use the digital display key buttons to select the update file on the flash drive and then install it.GPS Antenna Not WorkingAnother Polaris Sportsman Digital Display issue you might face is, the GPS antenna might not communicate effectively with the display. In most cases, there will not be any GPS data on the screen. This is usually caused by a defective antenna or an antenna that is not powered correctly, so you need to double check your antenna so see if it is working.No Satellite Reception On DeviceThe Polaris Sportsman Digital Display may face problems of receiving a satellite connection. This usually happens when there are bad weather conditions or when there are interfering electrical devices within the antenna. If you fail to troubleshoot the problem by removing interfering devices, there is a chance that the antenna is defective and needs to be replaced.Poor Satellite ReceptionThe Polaris Interactive Digital Display has a problem of getting poor satellite reception. This makes it harder for your GPS to function. This problem usually happens when there is poor visibility in the sky or bad weather. It can also happen when there is electrical interference or when the antenna has a problem. In order to resolve this issue, you can try using the device when there is perfect weather or you can try checking whether there are any devices interfering with the satellite connection.How To Avoid Polaris Sportsman Digital Display IssuesThe best way to avoid Polaris Sportsman Digital Display issues it to regularly care for your device. Avoid cleaning it with water directly or exposing it to harsh temperatures as there is a chance that it will become defective. If you notice that your interactive digital display has malfunctioned, its best to take it to a reputable Polaris dealer and have it fixed. Avoid doing DIY repairs when you know nothing about electronics.Polaris Sportsman 450 Display Not Working?If you discover that the display of your Polaris Sportsman 450 is not working, please refer to the above problems and try to troubleshoot using the guide above. It is worth noting that if you are unable to fix the device by yourself, please contact a reputable dealer to help you out.Is Polaris Chinese Made?No, Polaris is not Chinese made, however, they do some of their parts from China which is why some people assume that the ATVs are manufactured there.What Is The Recall On Polaris 570 Sportsman?The Polaris 570 was recalled because it was discovered that the ATVs were not properly assembled. There was a wiring harness that was not properly assembled by the manufacturer and as a result this affected functionality of the front brakes. All the Polaris 570 Sportsman ATVs were called back so that the problem could be fixed.Where Are The Fuses On A Polaris Sportsman?The fuses on a Polaris Sportsman are located in a fuse box that is under the dash but slightly above the throttle and brake pads. So, if you think that the fuses have been damaged, simply check that area and replace the fuse with a new one.What Country Is Polaris Made?Polaris vehicles are made in the United States of America. They are considered one of the best utility vehicles available on the market.Why Does Polaris Have So Many Recalls?Polaris as so many recalls because, they would have discovered a problem with their vehicles. So in order to prevent people from getting hurt, they usually recall back the vehicles so that they can be fixed.ConclusionThe Polaris Digital Display is a good device to have on your ATV. It will definitely make your life easier. It is important to remember that proper maintenance and care of the device will enable it to last longer. Having a Polaris Sportsman digital display is a dream come true for many All-Terrain Vehicle (ATV) fanatics. However, this device tends to experience problems overtime. This article highlights some of the digital display problems and how you can easily troubleshoot them. What Is A Sportsman Digital Display?The Sportsman digital display, formally known as the Polaris Interactive Digital Display (PIDD) is a device that can be attached to your Polaris Sportsman ATV. The device allows you to connect to your mobile phone whilst riding. It also gives you access to your GPS and it can also notify you when your Polaris Sportsman as a problem.Polaris Sportsman Digital Display IssuesScreen Frozen/ LockedOne of the most problematic issues faced by the Polaris Sportsman digital display is that the screen usually freezes or locks. In order to troubleshoot this problem you will have to reset the digital display by pressing and holding the key 5 for 20 seconds.Screen Appears WhiteAnother issue experienced by the Polaris Sportsman digital display is that the screen can become white. This usually happens when the interactive digital display is turned on. It is usually a sign that the device was left in diagnostics mode during manufacturing testing. In order to troubleshoot the problem, you should push and hold key 5 until the device reboots. When it has rebooted, you should update the interactive digital display with the most current software. Screen Turns Black While UpdatingThe screen of a Polaris Sportsman digital display can turn black whilst you are trying to install an update. This is a sign that the device is failing to update or the file on your flash is corrupted. In order to troubleshoot this problem, please follow the steps below:Remove the flash drive from the device and re-format it as FAT 32.Turn off the Polaris Interactive Digital Display for 10 seconds and then switch it back on.Visit the RIDER X website and re-download the latest update of the software.Put the flash drive into the USB port on the digital display and then wait for the device to go into boot loader mode.Once it is in boot loader mode, use the digital display key buttons to select the update file on the flash drive and then install it.GPS Antenna Not WorkingAnother Polaris Sportsman Digital Display issue you might face is, the GPS antenna might not communicate effectively with the display. In most cases, there will not be any GPS data on the screen. This is usually caused by a defective antenna or an antenna that is not powered correctly, so you need to double check your antenna so see if it is working.No Satellite Reception On DeviceThe Polaris Sportsman Digital Display may face problems of receiving a satellite connection. This usually happens when there are bad weather conditions or when there are interfering electrical devices within the antenna. If you fail to troubleshoot the problem by removing interfering devices, there is a chance that the antenna is defective and needs to be replaced.Poor Satellite ReceptionThe Polaris Interactive Digital Display has a problem of getting poor satellite reception. This makes it harder for your GPS to function. This problem usually happens when there is poor visibility in the sky or bad weather. It can also happen when there is electrical interference or when the antenna has a problem. In order to resolve this issue, you can try using the device when there is perfect weather or you can try checking whether there are any devices interfering with the satellite connection.How To Avoid Polaris Sportsman Digital Display IssuesThe best way to avoid Polaris Sportsman Digital Display issues it to regularly care for your device. Avoid cleaning it with water directly or exposing it to harsh temperatures as there is a chance that it will become defective. If you notice that your interactive digital display has malfunctioned, its best to take it to a reputable Polaris dealer and have it fixed. Avoid doing DIY repairs when you know nothing about electronics.Polaris Sportsman 450 Display Not Working?If you discover that the display of your Polaris Sportsman 450 is not working, please refer to the above problems and try to troubleshoot using the guide above. It is worth noting that if you are unable to fix the device by yourself, please contact a reputable dealer to help you out.Is Polaris Chinese Made?No, Polaris is not Chinese made, however, they do get some of their parts from China which is why some people assume that the ATVs are manufactured there.What Is The Recall On Polaris 570 Sportsman?The Polaris 570 was recalled because it was discovered that the ATVs were not properly assembled. There was a wiring harness that was not properly assembled by the manufacturer and as a result this affected functionality of the front brakes. All the Polaris 570 Sportsman ATVs were called back so that the problem could be fixed.Where Are The Fuses On A Polaris Sportsman?The fuses on a Polaris Sportsman are located in a fuse box that is under the dash but slightly above the throttle and brake pads. So, if you think that the fuses have been damaged, simply check that area and replace the fuse with a new one.What Country Is Polaris Made?Polaris vehicles are made in the United States of America. They are considered one of the best utility vehicles available on the market.Why Does Polaris Have So Many Recalls?Polaris as so many recalls because, they would have discovered a problem with their vehicles. So in order to prevent people from getting hurt, they usually recall back the vehicles so that they can be fixed.ConclusionThe Polaris Digital Display is a good device to have on your ATV. It will definitely make your life easier. It is important to remember that proper maintenance and care of the device will enable it to last longer. When you are an owner of an ATV, your vehicle will encounter many problems. Some may simply be something that causes you to slow down when youre riding or a minor inconvenience, some might make your vehicle totally useless. A display that doesnt work is an inconvenience, unless your Sportsman wont start. If you have problems with the digital display, there are a number of problems that could be causing that, something from bad connections to swapping out batteries could be the solution. But before acting hastily, a little diagnosis is best. So, read on! Join our free Facebook group and ask your question there. We promise you, youll get an answer from one of our team members or group members.Join the group here! If your display does not power up at all, the problems could be within the power supply. This could also happen when you are riding. The power supply to your display could cut off, drawing a blank on your instrument cluster. This could also result in your engine dying, as this user encountered. I have a 2012 Polaris Sportsman HO that completely shut off while I was riding it up the road. All the lights on the display went out, and the machine shut off. There is no way to restart it. I checked the kill switch and toggled it on and off and in between to see if that was the issue, but that didnt make a difference. The first place to look at if this does occur is the battery. Make sure your battery is fully charged and supplying enough power to operate your display. A weak battery will not be able to power your display or even fire up your engine. Sometimes, even aftermarket electrical add-ons could drain the power from your battery. Faulty wiring, damaged fuses, or any other impediment that cuts the power flow to your display could also be the case. If you notice that your engine also shuts off when your display blacks out, you should also consider checking the kill switch. Again, any electrical issues leading to your kill switch can be the problem. Also read: 5 x Polaris Sportsman XP 1000 Problems and how to Fix it! (1,994) 200+ bought \$72.95 Features: Aerodynamic spoiler design, superior wind tunnel tested ventilation, multi-density EPS for enhanced safety, fully removable interior UPGRADE HELMET EDITORS CHOICE A flickering Polaris Sportsman display is often the result of loose connections. My display started to flicker on and off last week. At first, it only lasted for about 30 seconds. Now, it does it for about the first 10 minutes its running. If this were the case with your Polaris Sportsman display, you need to inspect every single connection individually. Make sure no wires are damaged and they are all connected appropriately. Inspect the connectors for corrosion, cleanliness, and bad connections. Again, the problem could be with the battery itself. If you have installed any aftermarket electrical accessories, they might be drawing power from the battery and not leaving enough for the display. So, check the voltage that is reaching the digital display. In some models of the Sportsman, the ignition switch is to blame. A bad batch of switches was known to cause this same problem on many ATVs. Try shaking the key, if it flickers more, the problem could be with the ignition switch. Also read: 7 x Polaris Sportsman 450 Problems and how to Fix it! Advertisement A display that works is useless if your display is showing incorrect readings. If your display is showing incorrect readings about your speed, RPMs, or other parameters, the first place to inspect is the sensors. Faulty sensors might be generating incorrect readings, which result in faulty display readings. You need to inspect everything from the wheel speed sensor to the engine temperature sensor and make sure they are working properly. Once the sensors are ruled out, if your display is still displaying incorrect readings, the problem might be with the display itself. If your display is to blame, you have to get it replaced. A replacement display could cost anywhere from \$200 to \$500 depending on the model and year of your Polaris Sportsman. Also read: 6 x Polaris Sportsman 850 Problems and how to Fix it! If your Polaris Display is completely blank, chances are you got a blown fuse on your hand. This is a simple repair to do, check the fuse of your Polaris Display and replace it if necessary. Another possible cause is a loose connection. You cant expect your display to power up if its not getting power. Make sure your display is properly connected. Check for corrosion, dirt, and damaged wiring. You cant rule out software issues, either. In some cases, a software glitch may cause the display to not work properly. Try resetting the ATVs computer system by disconnecting the battery for a few minutes, then reconnecting it. In some cases, you will only lose your display partially, while the rest of your display works fine. I took my ATV in and the dealership replaced the stator and rectifier due to starting problems. They also replaced the seal and gasket on the oil pressure pump. My digital dash worked fine, but when I got it back, my gas gauge did not even show up anymore. I wigged a couple of wires and got it to flicker off, and on briefly, now I cant even do that! Took it back, and they said they could find no loose wires or connections, and it did not get fixed. Also read: 6 x Polaris Sportsman 500 Problems and how to Fix it! Every bit of information you get through your Sportsmans display is important. While your display clock might not be at the top of the list, it is still an important feature of your display. And when talking about a frozen display, it is often the clock that ends up getting frozen. My sons 2020 570 Sportsman just came out of storage. What a winter! Everything is working good except when I go to set the time. Can set it okay and use the mode button after every step. I get it to the proper time, but it will not change. Everything else on the display screen works properly. I tried 5 times and no luck. If this were the case, the culprit is probably your battery. A low battery can cause your clock to run slower or freeze altogether. Try unplugging your battery and leaving it for about 20 minutes and plugging it back again. If that doesnt do the trick, try recharging your battery. Attach the fully charged battery back to your rig, which would probably get your clock working again. Just like the blank display issue, it could be a problem with the software as well. Try resetting your ATVs computer. Also read: 5 x Polaris Sportsman 570 Problems and how to Fix it! One of the cool features of the Polaris Sportsman display is the ability to change the color of the backlight. As cool as it is, some owners have faced an issue with the backlight not working properly. The backlight is actually an important feature that increases the visibility of your instrument cluster. Losing will make it harder to read what is displayed, especially in low-light conditions. Often when the backlight fails, the problem lies in a burnt fuse. Check the displays fuse and replace it if necessary. The backlight could also end up faulty over time due to wear and tear due to harsh environmental conditions. If you are having trouble with your Polaris General digital display, you should eliminate the possible suspects one by one. Start with the power source itself. With most of the problems mentioned above, the battery is always a common cause. So, before digging deeper, make sure that your battery has enough power to operate your display. And also make sure that the power generated by the battery makes it to the digital display. If not, you might have to check the connections leading to the digital display. Once youve made sure that there is a power supply to your digital display, you have to ensure that the display itself is properly connected. Ensure that all wiring connections are secure and free from any corrosion or damage. While you are at it, you should also check the fuse. Check the fuse box and replace any blown fuses. If your digital display is still faulty, you should try resetting it. Try resetting the display by disconnecting the battery for a few minutes, then reconnecting it. If this does not work, the display may need to be replaced. And replacing the display is not cheap. So, before replacing your display, it is a suitable option to take your Sportsman to your local dealer. Also read: 5 x Common Polaris Sportsman 1000 High Lifter Problems! For many enthusiasts, the Polaris Sportsman stands as a beacon of high-performance, off-road capability and durability. However, even the most well-engineered vehicles can experience technical difficulties, and the Polaris Sportsman is no exception. One such challenge owners may encounter is issues with the digital displayan essential component for monitoring vehicle performance and navigation. Understanding the Digital Display System on a Polaris SportsmanThe digital display on a Polaris Sportsman, often referred to as the instrument cluster or dashboard, is a hub of information for the rider. It provides essential data such as speed, RPM, gear selection, fuel level, engine temperature, and even diagnostic information for the vehicles electronic systems. In newer models, the display might also include GPS capabilities and ride planning features.However, with sophistication comes complexity. The combination of electronic components and rugged outdoor use can sometimes lead to technical issues.Common Issues with Polaris Sportsman Digital DisplayOwners of Polaris Sportsman ATVs often report several issues regarding the digital display, which can range from minor annoyances to major inconveniences that could affect the vehicles operation and safety. Blank or Flickering ScreenOne prevalent problem is a display that goes blank or flickers. This can be particularly troublesome while traversing difficult terrain, where constant monitoring of the ATVs systems is crucial.Inaccurate ReadingsAnother issue can be inaccurate readings on the display, where the speedometer, fuel gauge, or other sensor-based information does not accurately reflect the state of the vehicle. This could lead to situations where the rider is unaware of low fuel or a potential overheating engine.Unresponsiveness to ControlsDisplay unresponsiveness is also common. This occurs when the buttons designed to toggle through display screens or settings simply stop working, rendering the rider unable to access different types of information.Complete FailureIn more severe cases, riders might experience complete failure of the digital display, where it does not turn on at all. When this happens, its not just the loss of convenience but could very well be the loss of critical information needed to safely operate the vehicle.Troubleshooting and Repairing Polaris Sportsman Digital Display IssuesWhen it comes to addressing these issues, there are several steps you can take to either rectify the problem on your own or determine when to seek professional assistance.Check Power Supply and FusesBefore we deep dive into more complex solutions, it is essential to ensure that the basics are covered. ATV users should regularly check the power supply, including the battery and its connections, to make certain that the issue is not due to a simple lack of power. Another quick check is the fuse box: a blown fuse related to the instrument cluster could be the culprit.Inspect the battery for a proper charge and clean terminals.Review the fuse box for any blown fuses and replace them if necessary.Inspect Wiring ConnectionsIf power supply and fuses are intact, the next step is to inspect the wiring and connections to the digital display.Carefully dismantle the protective coverings to access the back of the dashboard.Check for any loose, frayed, or corroded wires and connectors.Ensure that all connections are secure and that the wiring harness is in good condition.Reset the DisplaySometimes, a simple reset can resolve temporary glitches or software bugs in the display system.Locate the reset button, if available, or refer to the manual for reset procedures.Follow the steps to effectively reset the system.Observe if the display returns to normal functioning post-reset.Software UpdateFor newer models equipped with updatable software, ensuring the latest firmware is installed can solve issues stemming from software glitches.Follow the manufacturers instructions to update the ATVs display software.Ensure that any software updates are compatible with your model.Seek Professional DiagnosisIf these steps do not resolve the issues, it may require a deeper exploration into the ATVs electronic systems, which might be best handled by professionals. They can employ diagnostic tools to determine if the problem lies with the digital display unit itself or with another component in the vehicles electronic system. A professional technician will be able to test individual parts and protocols to locate the exact problem.Search for an authorized Polaris service center near you.Schedule an appointment for a thorough diagnostic check.Discuss with the technician about the observed issues and any attempted fixes.Replacement of Digital DisplayIn cases where the display is irreparably damaged or defective, replacement might be the only option. Its important to consider the cost of replacement versus the value it adds, especially with older ATV models.Enquire about the cost of a new digital display unit.Assess whether full replacement is worth the investment.If opting for replacement, ensure its carried out by professionals to maintain the integrity of the vehicles systems.*Note: Make certain to discuss any issues or repairs with the service technicians and understand whether there are any implications for your vehicles warranty.* Repairing digital display issues of Polaris Sportsman can range from simple fixes to complex replacements. Keeping a keen eye on the performance of your display and carrying out regular maintenance can often prevent these issues from arising. However, understanding how to address such problems when they occur will keep you informed, proactive, and more importantly, safe during your off-roading adventures. Frequently Asked Questions1. What is the recall on Polaris Sportsman?Polaris Sportsman had various recalls over the years due to safety concerns and performance issues. It is recommended to check with the official Polaris website or contact a Polaris dealership to get the most accurate and up-to-date information regarding recalls.2. What is the recall on the Polaris Sportsman 2023?As of now, since the Polaris Sportsman 2023 has not been released yet, there are no specific recalls announced for that particular model. However, it is always advisable to stay updated with Polaris notifications and check for any potential recalls after the release.3. What is the recall on 2004 Polaris Sportsman ECM?In 2004, Polaris Sportsman models went through a recall related to the Electronic Control Module (ECM). The recall was issued due to potential ECM failures that could cause the engine to stall, increasing the risk of a crash. Owners of affected units were advised to contact their local Polaris dealer to have the defective ECM replaced.4. What is ECM on Polaris?ECM stands for Electronic Control Module. In Polaris vehicles, the ECM is an essential component that controls various engine functions, including timing, fuel injection, and emissions. It helps optimize engine performance and ensures smooth operation.5. How do I reset the digital display on my Polaris Sportsman?To reset the digital display on your Polaris Sportsman, follow these steps:Turn the ignition key to the On position without starting the engine.Press and hold the mode/reset button on the digital display for about 3 seconds until the display resets.Release the button and check if the display has reset successfully. If not, repeat the process or consult your owners manual for further instructions.6. Why is my Polaris Sportsman digital display not working?There are several reasons why the digital display on your Polaris Sportsman may not be working, including a blown fuse, loose wiring connections, a faulty display unit, or a malfunctioning ECM. It is recommended to check the fuse, inspect the wiring, and if the issue persists, consult a certified Polaris technician for diagnosis and repair.7. Can I replace the digital display on my Polaris Sportsman myself?Replacing the digital display on your Polaris Sportsman may require specific technical knowledge and skills. It is recommended to refer to the owners manual or consult a qualified Polaris dealership or technician to ensure proper installation and compatibility with your model.8. How much does it cost to repair a faulty digital display on a Polaris Sportsman?The cost of repairing a faulty digital display on a Polaris Sportsman can vary depending on the nature of the issue, the model year, and the labor rates of the service provider. It is advisable to contact authorized Polaris dealerships or service centers to get an accurate estimate for the specific repair needed.9. Can a software update fix digital display issues on a Polaris Sportsman?In some cases, software updates provided by Polaris can address certain digital display issues. It is recommended to check Polaris official website or contact a Polaris dealership to inquire about available software updates for your specific model and if they can potentially resolve the display issue.10. How can I prevent digital display issues on my Polaris Sportsman?To minimize the chances of experiencing digital display issues on your Polaris Sportsman, you can follow these preventive measures:Regularly inspect the wiring and connections to ensure they are secure and free from corrosion.Avoid exposing the display to excessive moisture or extreme temperature conditions.Follow the maintenance schedule outlined in the owners manual to keep the vehicle in optimal condition.Avoid using incompatible accessories or modifying the electrical system without consulting a professional.In case of any abnormal behavior or malfunctioning of the display, seek professional assistance promptly. Your digital display on your ATV is debatably one of the most important tools on your rig. Its where you get all of the information you need to ride safely and be in tune with your ride. When the digital display goes out, your info center is completely shut off and youre on your own. Its important that you get towards fixing it as soon as possible so you can keep on riding. Knowing how to fix the digital display on your ATV is a process that always starts with diagnosing the problem. There are a lot of different reasons why the digital display isnt working, so you have to start at the top of the list and work your way down it. You may need to completely check the wiring system because when one wire gets crossed in the wrong way, the whole machine wont work right. Aside from that worst case scenario, you might have success with something as simple as replacing a blown fuse. Whatever you need to do, well help walk you through how to fix an ATV digital display screen and hopefully get you wired back into your rig. Image from www.hondatvforums.net Unplug the battery One of the easiest fixes is to simply disconnect your battery and leave it overnight. Sometimes a shorter break can work, but you may as well try it all night long. This can work to reset the system as it will allow for a complete cutoff from power. Its probably the easiest way to fix your ATVs digital display, but often the most reliable. Check the fuses For any electrical issues, checking the fuse box is a good bet. For whatever reason, your system may be putting out too much of a current and shorting out the fuse. Its an easy fix, but youll need the right tools to do so. To check the fuse, youll need a multimeter. Connect the meter to the two small metal plates on the fuse, outside of the number, and check for a reading. If your meter gives you a reading, the fuse is still working and it isnt the problem. If you get no response, simply replace the fuse and you should be good to go. Check all connections Going through the entire wiring system to look for loose connections might be your last option. This will require a solid working knowledge of electrical systems, but can be done by novices as well. Essentially, you are looking for anything that may have come loose during your rides and disconnected any wires leading to your digital display. These issues can often be fixed by refastening the wire or even soldering the wire to make it more secure. Remember that you need to unplug your battery before going into any electrical systems just in case you end up crossing some wires and dont want to end up getting a huge shock of power running through you.

Polaris sportsman 700 display not working. Polaris sportsman 450 display not working. Polaris sportsman 570 display not working. Polaris sportsman digital display issues. 2018 polaris sportsman 570 display not working. Polaris sportsman 500 display not working.