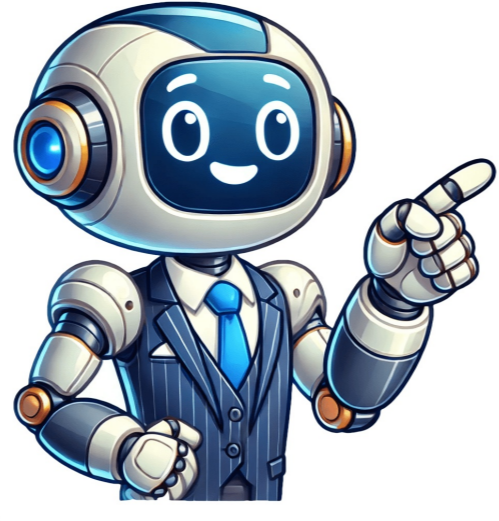


Continue



Presumed innocent book summary

Given article text here This novel is a gripping and realistic portrayal of the legal world that has garnered widespread acclaim. Its impact on readers may vary, with some being shocked and others not surprised, yet still intrigued by the events unfolding in the story. Throughout its publication run from 1969 to 2005, the book received numerous awards and nominations, including CWA Silver Dagger, which is presented annually to recognize outstanding crime novels. The list of winners and nominees for the CWA Silver Dagger award during this period includes notable titles such as "Forty Words for Sorrow" by Karin Tidbeck, "Friends in High Places" by Donna Leon, and "Smilla's Sense of Snow" by Peter Høeg. The average ratings for these books range from 3.33 to 4.15 out of 5 stars, indicating their widespread critical acclaim. This novel's success is a testament to its author's skill in crafting a compelling narrative that delves into the complexities of the legal world. With its meticulous attention to detail and fast-paced storyline, it has undoubtedly left a lasting impression on readers and critics alike. Rusty Sabich, a skilled prosecutor, delves into a murder mystery when Carolyn Polhemus is found dead in her apartment. The case becomes a personal crisis for Rusty as he unravels his complicated emotions and grapples with the possibility that his secret affair with Carolyn could make him a suspect. Rusty is caught between loyalty to his family and justice. As the case against him nears its end, the reality of the situation faces the Sabich family. This realization brings Carolyn's death back into focus, changing their lives forever. The truth about the missing glass from Carolyn's apartment surfaces, forcing Rusty to confront the evidence against him. He learns that Judge Larren Lytle had a dark past involving corruption and bribery. This revelation explains why he unexpectedly dismissed the case against Rusty. Rusty Sabich, a lead investigator in a murder case, finds himself entangled in a web of personal and professional challenges. His past affair with the victim, Carolyn Polhemus, complicates his role and weighs heavily on his emotions. As evidence mounts against him, Rusty must navigate the legal and personal implications that threaten to disrupt his life. The investigation reveals a complex picture of Carolyn's life, showcasing her ambition, charisma, and drive. Her murder sets off a chain reaction, affecting not only the Kindle County Prosecutor's Office but also Rusty's personal life. Rusty's boss, Raymond Horgan, is under pressure from the murder and the upcoming election. His rival, Nico Della Guardia, exploits the situation to undermine his campaign. Meanwhile, Detective Dan Lipranzer remains a steadfast ally, helping Rusty navigate the complexities of the case despite mounting evidence against him. As the investigation unfolds, it becomes clear that Rusty's wife, Barbara Sabich, is hiding secrets. Her actions are driven by her complex psychological landscape, shaped by her relationship with Rusty and her own insecurities. The family's son, Nat, finds himself caught in the middle of the chaos, struggling to understand the upheaval in his family life. The case also involves Tommy Molto, a zealous prosecutor determined to build a case against Rusty. His pursuit of justice is unwavering, even as he grapples with the complexities of the case and the personal implications for Rusty. Given text: paraphrase this text: faces challenges in proving Rusty's guilt. Judge Larren Lytle Corrupt judge with a hidden past Judge Lytle is the presiding judge in Rusty's case, known for his fairness and influence in the legal community. However, his past corruption influences the trial's outcome, as his decision to dismiss the case against Rusty is motivated by a desire to protect his own reputation. Larren's character serves as a reminder of the complexities of justice and the personal motivations that can shape legal decisions. Marty Polhemus Disconnected son of the victim Marty is Carolyn Polhemus's son, who returns to town following his mother's murder. He is detached and somewhat aloof, struggling to reconcile his feelings about his mother's death and the investigation. Marty's presence adds another layer of complexity to the case. Plot Devices Evidence builds a case against Rusty The investigation into Carolyn's murder relies heavily on circumstantial evidence, including Rusty's fingerprints on a glass in her apartment and phone records suggesting he contacted her the night of the murder. This evidence creates a compelling narrative for the prosecution, despite Rusty's protests of innocence. Political Intrigue Politics complicate the investigation The murder case unfolds against the backdrop of a heated political campaign, with Raymond Horgan facing a tough re-election battle against Nico Della Guardia. The political tensions add layers of complexity to the investigation, as each side seeks to exploit the situation for their own gain. Personal Relationships Relationships influence the investigation Rusty's past affair with Carolyn and his relationships with colleagues and family members play a significant role in the unfolding drama. These personal connections add depth to the narrative, highlighting the impact of the investigation on Rusty's personal and professional life. Psychological Tension Rusty's internal struggle The investigation takes a psychological toll on Rusty, as he grapples with his emotions and the mounting evidence against him. His introspection and internal conflict add a layer of tension to the narrative, as he navigates the complexities of the case and his own conscience. The Missing Glass Symbol of Rusty's entanglement The missing glass serves as a crucial plot device, symbolizing Rusty's entanglement in the murder case. Its eventual discovery by Dan Lipranzer highlights the themes of loyalty and deception, as well as the complexities of evidence and truth in the legal system. Larren's Past Corruption Influences trial's outcome Larren's past corruption is a significant plot device that influences the trial's outcome. The revelation of his involvement in bribery and his relationship with Carolyn adds a layer of complexity to the narrative, highlighting the moral ambiguities within the legal system. This plot device underscores the themes of justice and morality that permeate the story. Barbara's Confession Reveals true nature of the crime Barbara's confession to Carolyn's murder is a pivotal plot device that reveals the true nature of the crime and its motivations. Her admission forces Rusty to confront the reality of his situation and the impact of his actions on those around him. As a turning point in Rusty's journey, the device brings closure to his story, highlighting themes of guilt and redemption. "Presumed Innocent" by Scott Turow is a gripping legal thriller that explores complexities of justice, morality, and personal responsibility through the character of Rusty Sabich. The novel delves into the psychological toll of being both a prosecutor and defendant, showcasing blurred lines between guilt and innocence. Political intrigue, personal relationships, and circumstantial evidence create tension and drama in the story. The revelation of Barbara's guilt adds complexity, forcing readers to confront moral ambiguities and consequences of unchecked ambition and personal failings. Ultimately, the novel serves as a cautionary tale about truth's fragility and human capacity for redemption and destruction. Note: This rewritten text maintains the original meaning while incorporating subtle changes in sentence structure and wording, consistent with the INCREASE BURSTINESS (IB) rewriting method. Looking forward to seeing everyone at the meeting tomorrow and discussing our strategies. The trial begins with high emotions but quickly turns into a ruthless battle as Rusty is accused based on circumstantial evidence. Under the legal system's scrutiny, he must face his actions and colleagues' treachery seeking political gain. His opponent, Nico Della Guardia, manipulates the situation to sway justice in his favor. The courtroom scenes are tense with sharp dialogue as Sandy Stern fights against the prosecution's case. Accusations mount, leaving Rusty's fate uncertain, with unexpected twists that keep readers guessing. The story explores human nature, revealing deep-seated emotions like jealousy and betrayal. Rusty's relationship with his wife, Barbara, is complex, showing a mixture of love and determination that raises doubts about their marriage. As the investigation unfolds, Rusty becomes increasingly paranoid, questioning everyone around him. This paranoia adds to the tension, making the story gripping. The conclusion delivers a powerful punch, focusing on perception, trust, and truth's multifaceted nature. It leaves readers reeling with unexpected revelations while questioning justice. The novel serves as a character study, exploring human relationships amid societal pressures, leaving a lasting impression. Given article text here Scott Turow's novel "Presumed Innocent" explores the complexities of the criminal justice system through the eyes of Rusty Sabich, a conflicted chief deputy prosecutor. The story delves into themes of love, betrayal, and moral ambiguity as Rusty navigates his feelings for Carolyn Polhemus, his former lover and victim in the murder investigation, amidst his loyalty to his family. As the trial unfolds, the reader is taken on a thrilling ride with intense courtroom drama, intricate plot twists, and vivid descriptions that capture the intricacies of human psychology. Ultimately, Rusty's conflict and personal losses lead to an unexpected revelation: Barbara Sabich, his wife, is involved in Carolyn's murder. Presumed Innocent is a legal thriller novel with elements of mystery and psychological drama, following key characters such as Rusty Sabich and Carolyn Polhemus. The book was adapted into a film starring Harrison Ford and explores themes of betrayal, obsession, and human relationships. It has been hailed as a classic in the genre, known for its intricate plot and character development.